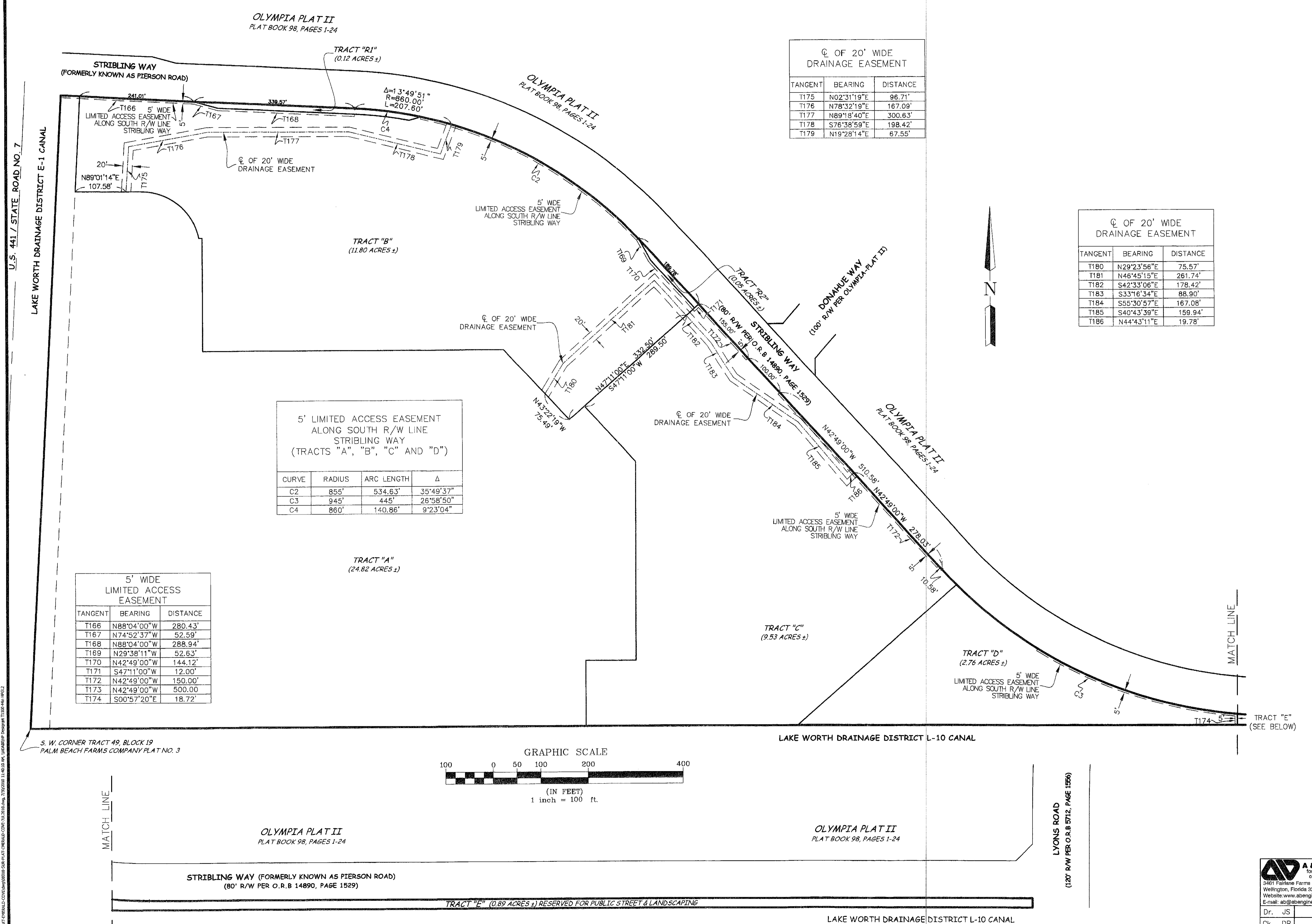


48

OLYMPIA CIVIC SITE

BEING A REPLAT OF PORTIONS OF TRACT 35 AND OF TRACTS 46 THROUGH 55, BLOCK 19, PALM BEACH FARMS COMPANY PLAT NO. 3,
 RECORDED IN PLAT BOOK 2, PAGES 45-54, PUBLIC RECORDS OF PALM BEACH COUNTY
 SITUATE IN SECTION 19, TOWNSHIP 44 SOUTH, RANGE 42 EAST
 VILLAGE OF WELLINGTON, PALM BEACH COUNTY, FLORIDA
 AUGUST, 2010



☉ OF 20' WIDE DRAINAGE EASEMENT

TANGENT	BEARING	DISTANCE
T175	N02°31'19"E	96.71'
T176	N78°32'19"E	167.09'
T177	N89°18'40"E	300.63'
T178	S76°38'59"E	198.42'
T179	N19°28'14"E	67.55'

☉ OF 20' WIDE DRAINAGE EASEMENT

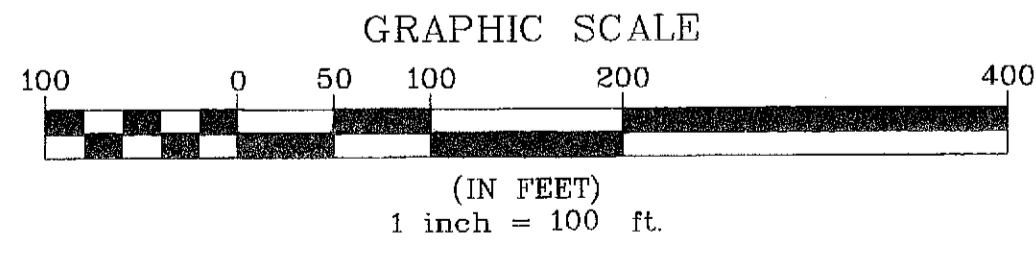
TANGENT	BEARING	DISTANCE
T180	N29°23'56"E	75.57'
T181	N46°45'15"E	261.74'
T182	S42°33'06"E	178.42'
T183	S33°16'34"E	88.90'
T184	S55°30'57"E	167.08'
T185	S40°43'39"E	159.94'
T186	N44°43'11"E	19.78'

5' LIMITED ACCESS EASEMENT ALONG SOUTH R/W LINE STRIBLING WAY (TRACTS "A", "B", "C" AND "D")

CURVE	RADIUS	ARC LENGTH	Δ
C2	855'	534.63'	35°49'37"
C3	945'	445'	28°58'50"
C4	860'	140.86'	9°23'04"

5' WIDE LIMITED ACCESS EASEMENT

TANGENT	BEARING	DISTANCE
T166	N88°04'00"W	280.43'
T167	N74°52'37"W	52.59'
T168	N88°04'00"W	288.94'
T169	N29°38'11"W	52.63'
T170	N42°49'00"W	144.12'
T171	S47°11'00"W	12.00'
T172	N42°49'00"W	150.00'
T173	N42°49'00"W	500.00'
T174	S00°57'20"E	18.72'



SHEET INDEX

DEDICATIONS AND APPROVALS	- SHEET 1
TRACT BOUNDARIES	- SHEET 2
EASEMENTS BY THIS PLAT	- SHEET 3
EXISTING RECORDED EASEMENTS	- SHEET 4

A & B ENGINEERING, INC.
 formerly known as Adair & Brady, Inc.
 civil, mechanical & electrical engineers • LAND SURVEYORS
 3461 Fairlane Farms Road Wellington, Florida 33414
 Website: www.abengineering.net
 E-mail: ab@abengineering.net

Dr. JS F.B. 0-6/1-17
 Ck. DP Date: AUGUST 2010
 Job. No. 08018

OLYMPIA CIVIC SITE EASEMENTS BY THIS PLAT

FP 2041	SHEET 3 OF 4
---------	--------------

U.S. 441 / STATE ROAD NO. 7
 LAKE WORTH DRAINAGE DISTRICT E-1 CANAL

MATCH LINE

MATCH LINE

S.W. CORNER TRACT 49, BLOCK 19
 PALM BEACH FARMS COMPANY PLAT NO. 3

OLYMPIA PLAT II
 PLAT BOOK 98, PAGES 1-24

OLYMPIA PLAT II
 PLAT BOOK 98, PAGES 1-24

STRIBLING WAY (FORMERLY KNOWN AS PIERSON ROAD)
 (80' R/W PER O.R.B. 14890, PAGE 1529)

TRACT "E" (0.89 ACRES ±) RESERVED FOR PUBLIC STREET & LANDSCAPING

LAKE WORTH DRAINAGE DISTRICT L-10 CANAL

LYONS ROAD
 (120' R/W PER O.R.B. 5712, PAGE 1556)